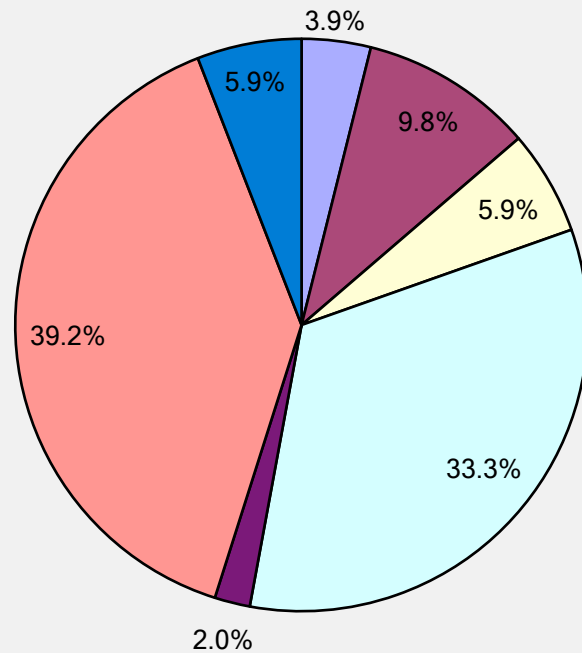


College of Nursing Survey Summary Results

CON Demographics

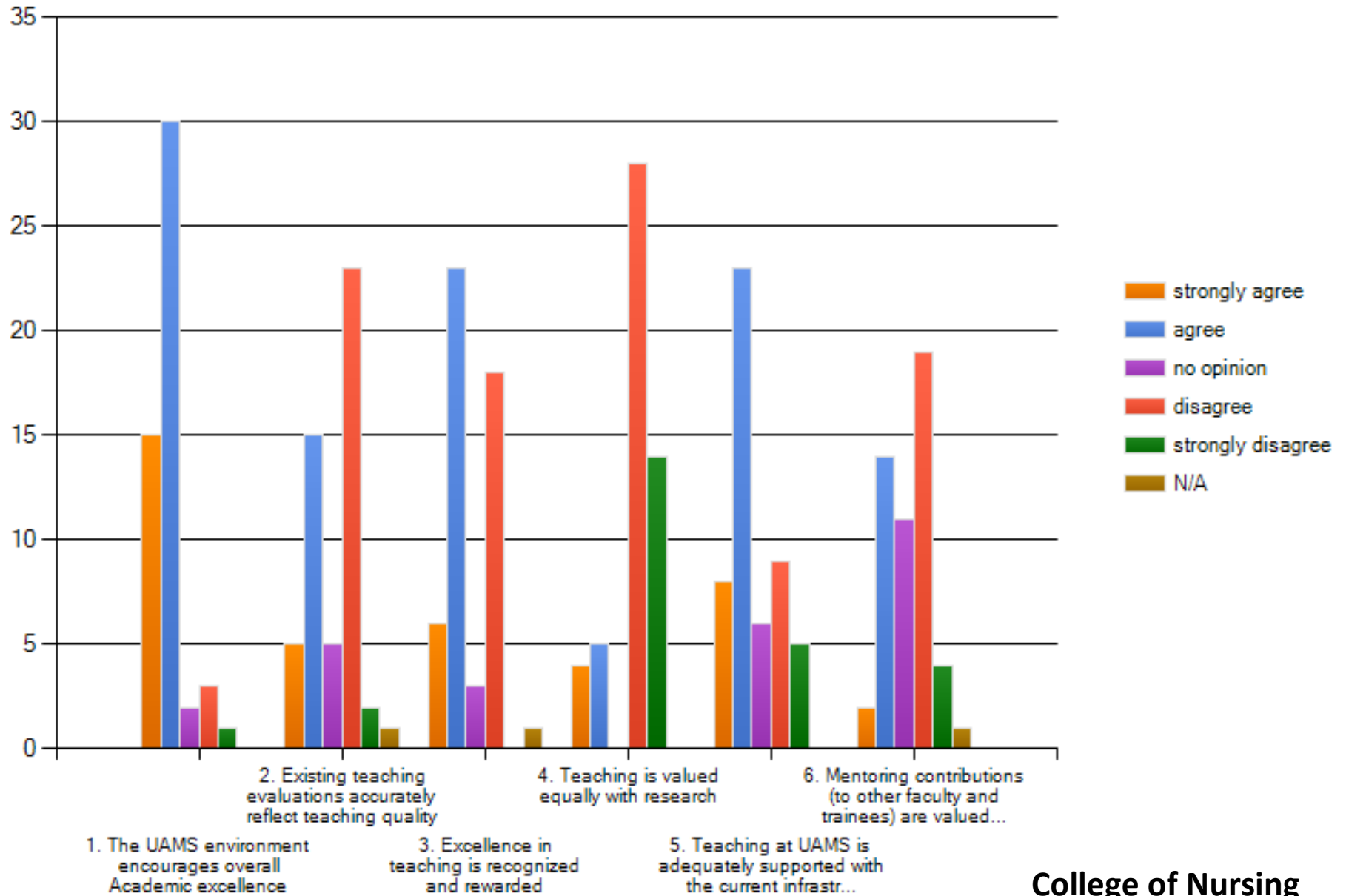
- 51 respondents
- 87.2% respondents are Full-time faculty
- 9.8% male; 90.2% female respondents
- 26.5% are clinicians (involved in the clinical mission)
- 80.4% are NON-tenure track; 5.9% are tenure track; 5.9% are already tenured

In which primary domain/specialty area is (are) your track(s)/positions?

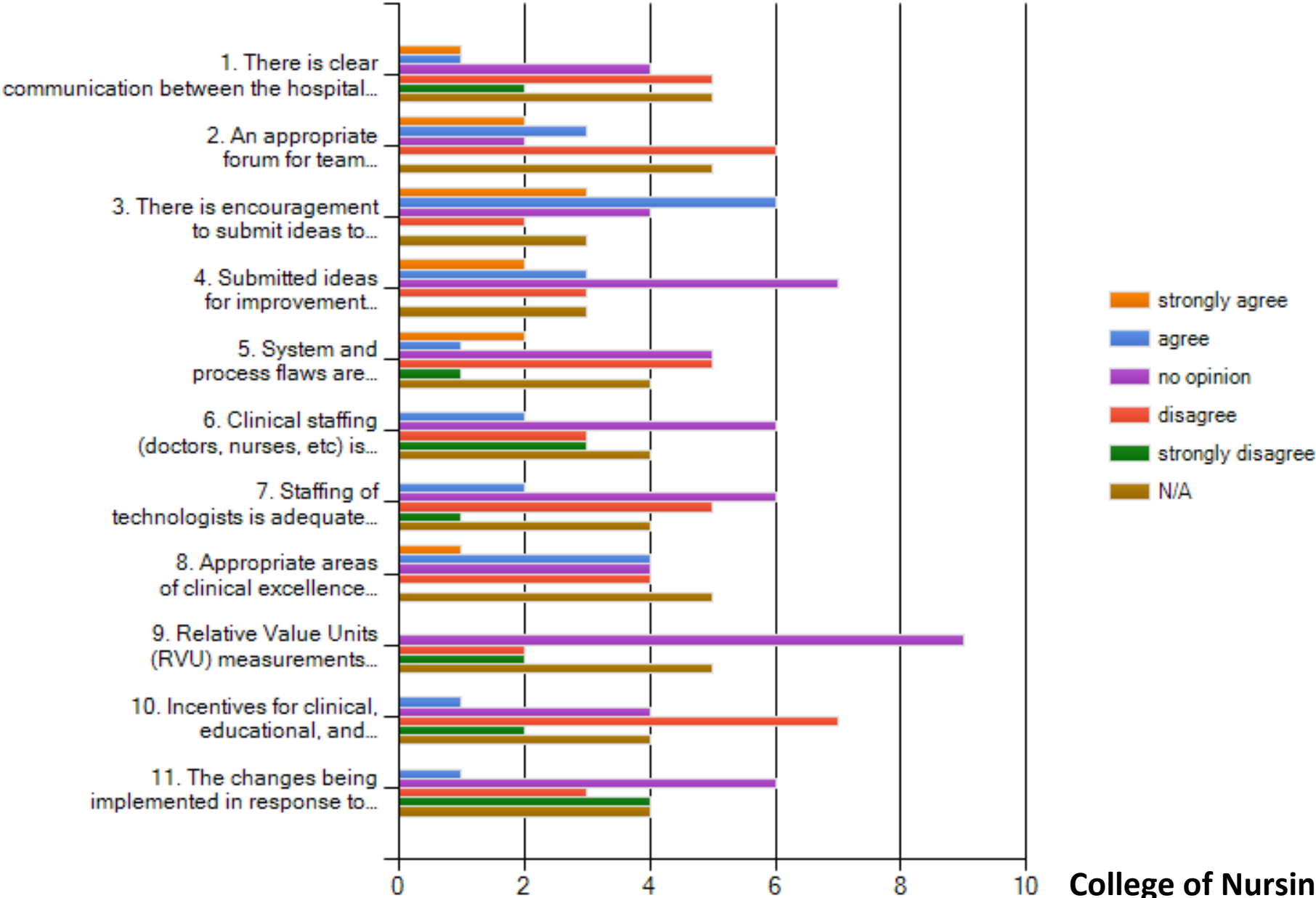


- Research
- Research and Education
- Clinical
- Clinical and Education
- Clinical and Research
- Education
- Administration

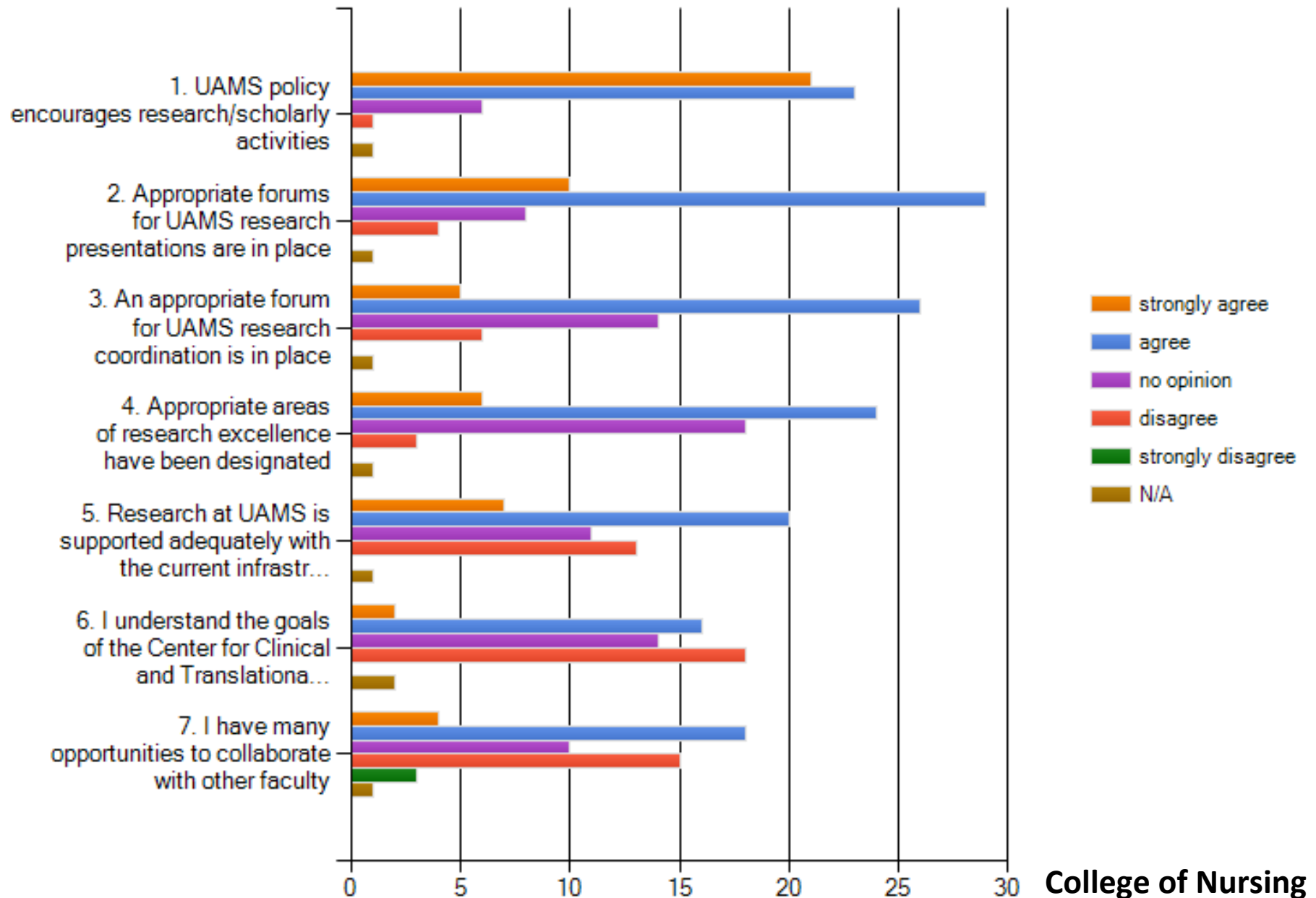
On a five-point scale, to what extent do you agree with the following statements (strongly agree, agree, no opinion, disagree, strongly disagree, not applicable) Teaching/Mentoring:



Clinical activities: To what extent do you agree with the following statements

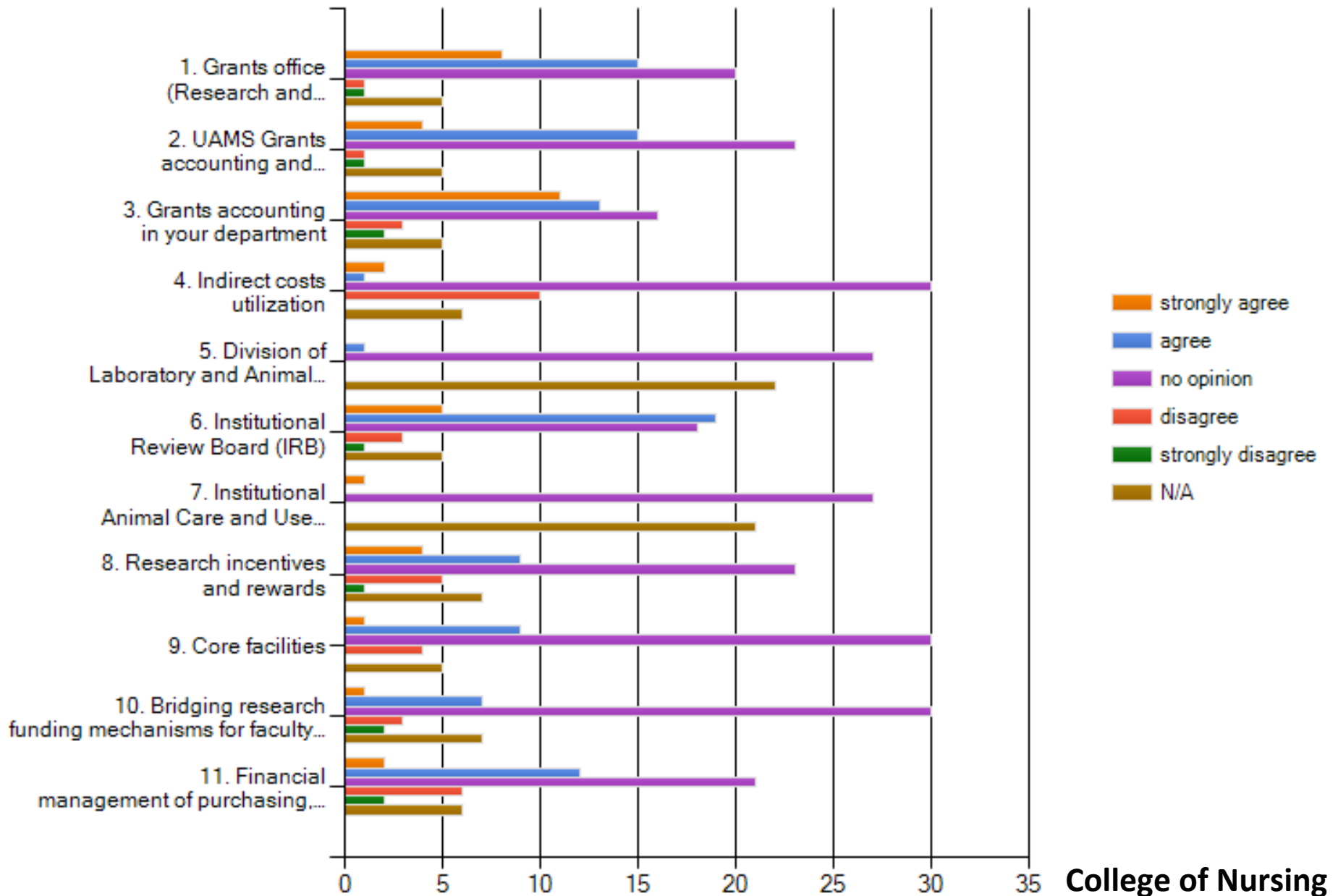


Research / Scholarly activities: To what extent do you agree with the following statements

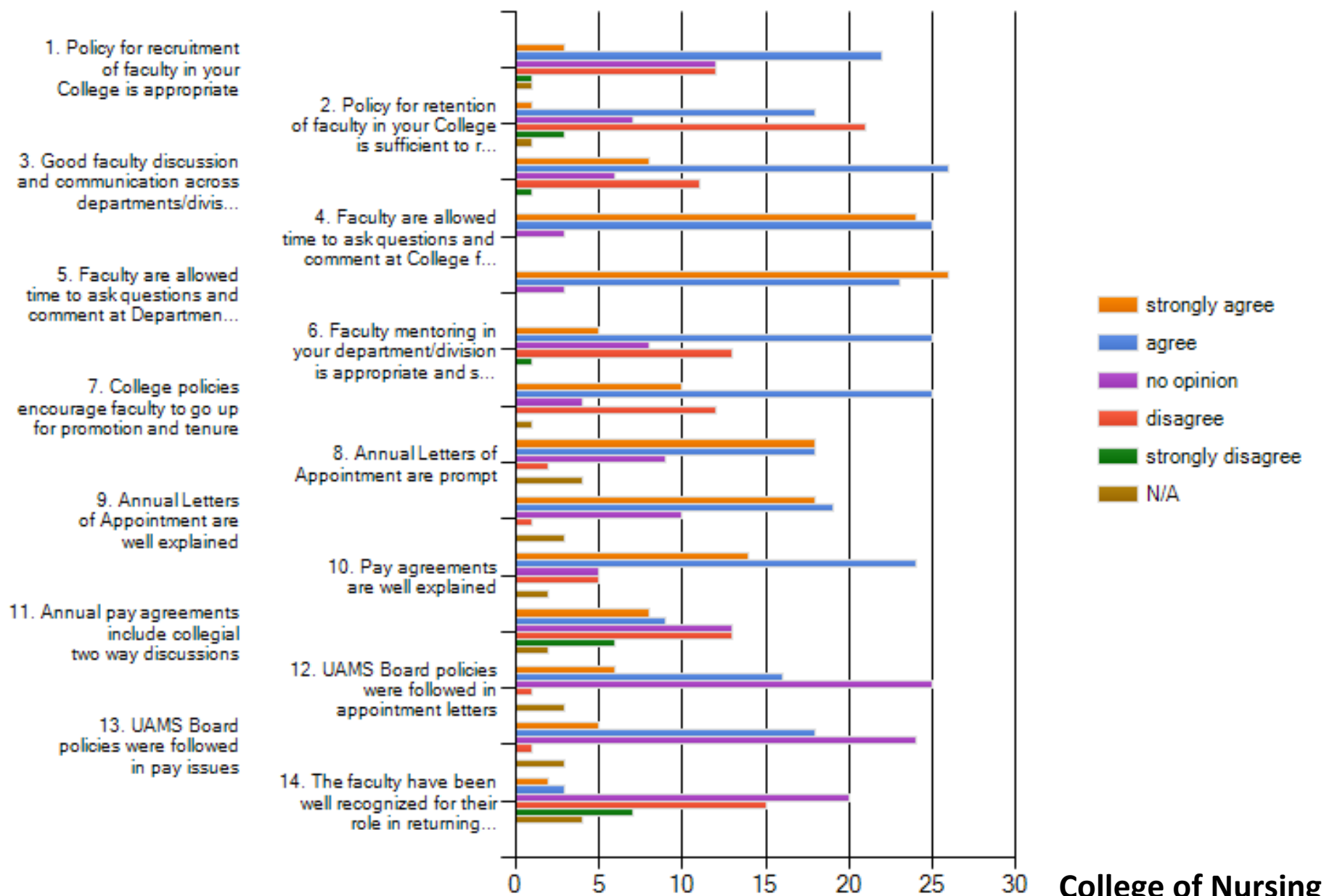


College of Nursing

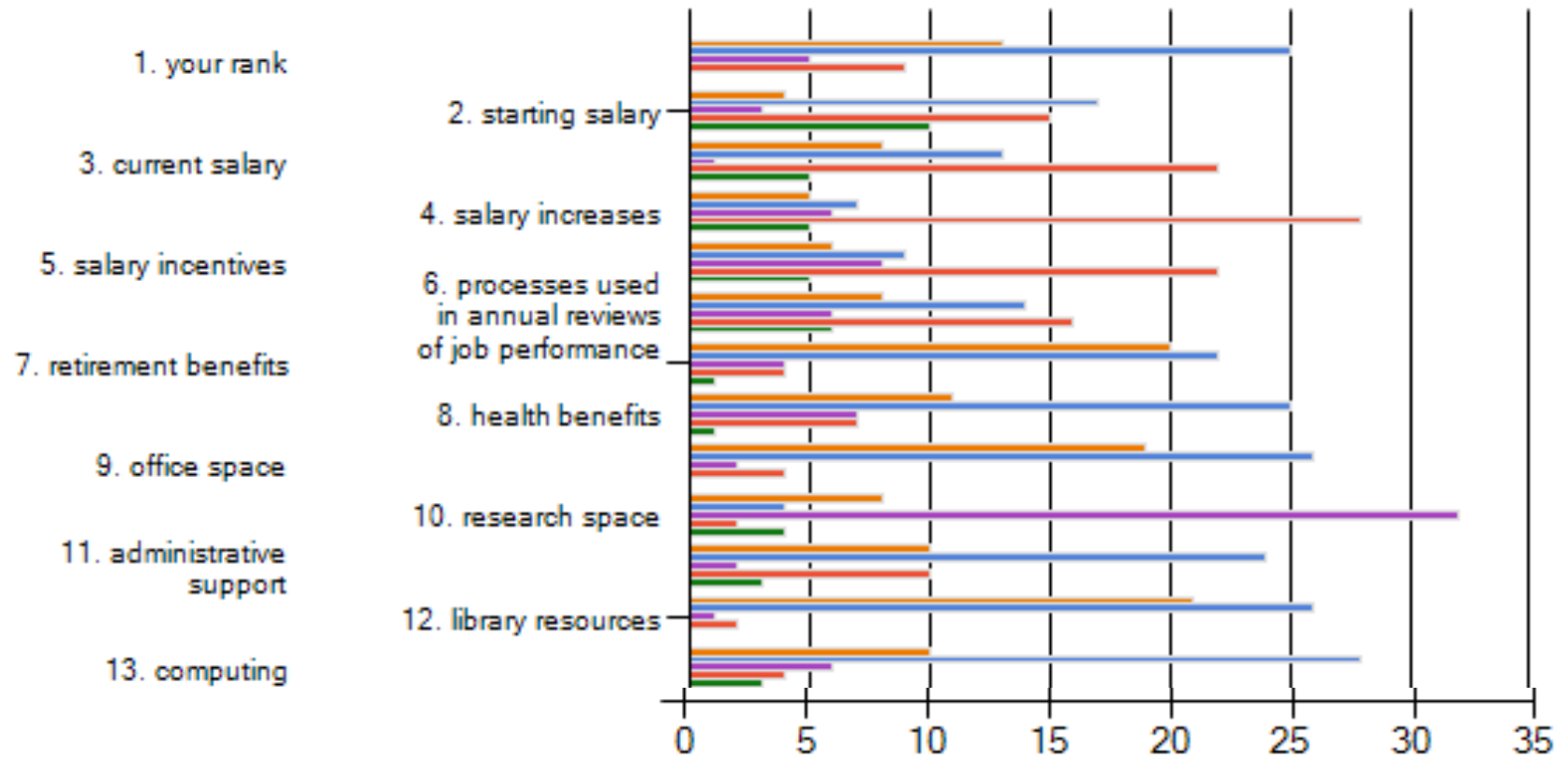
The following Administrative support entities and policies effectively facilitate research on campus:



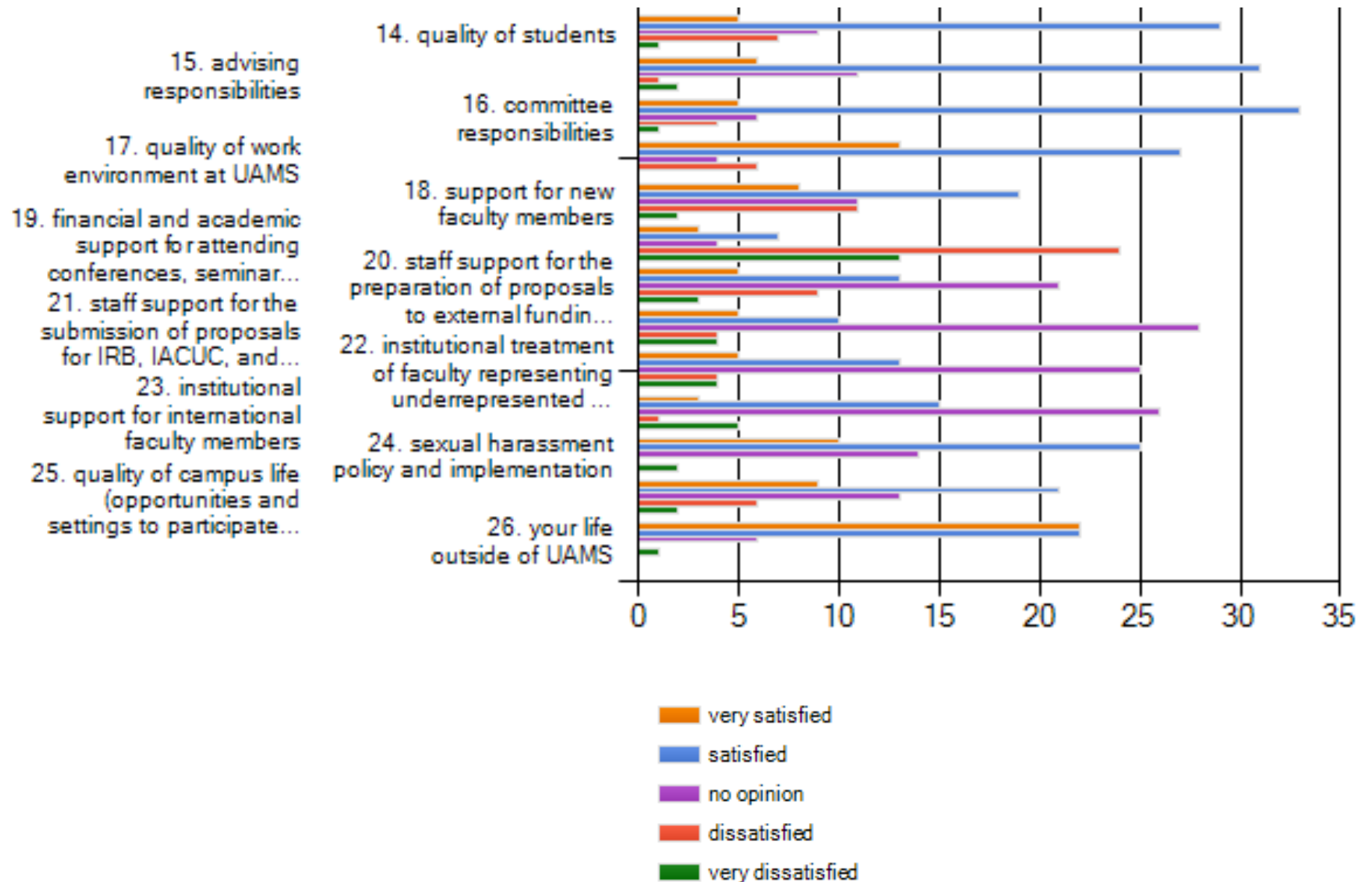
Faculty Affairs: To what extent do you agree with the following statements



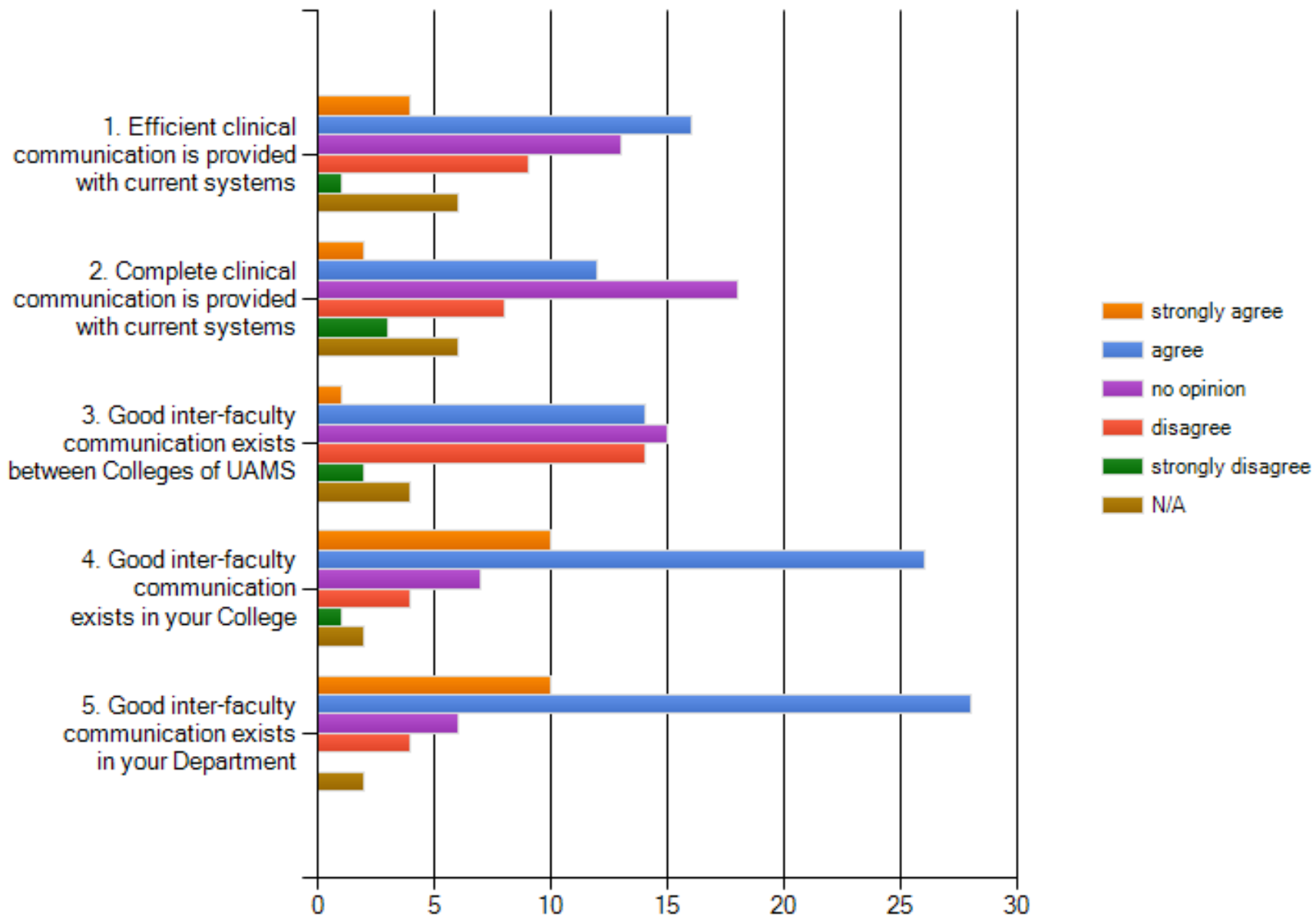
How well are you satisfied with:



How well are you satisfied with:



Communication: To what extent do you agree with the following statements



Rate the quality (excellent, very good, good, fair, poor) of give and take collegial discussions between you and each of the following:

