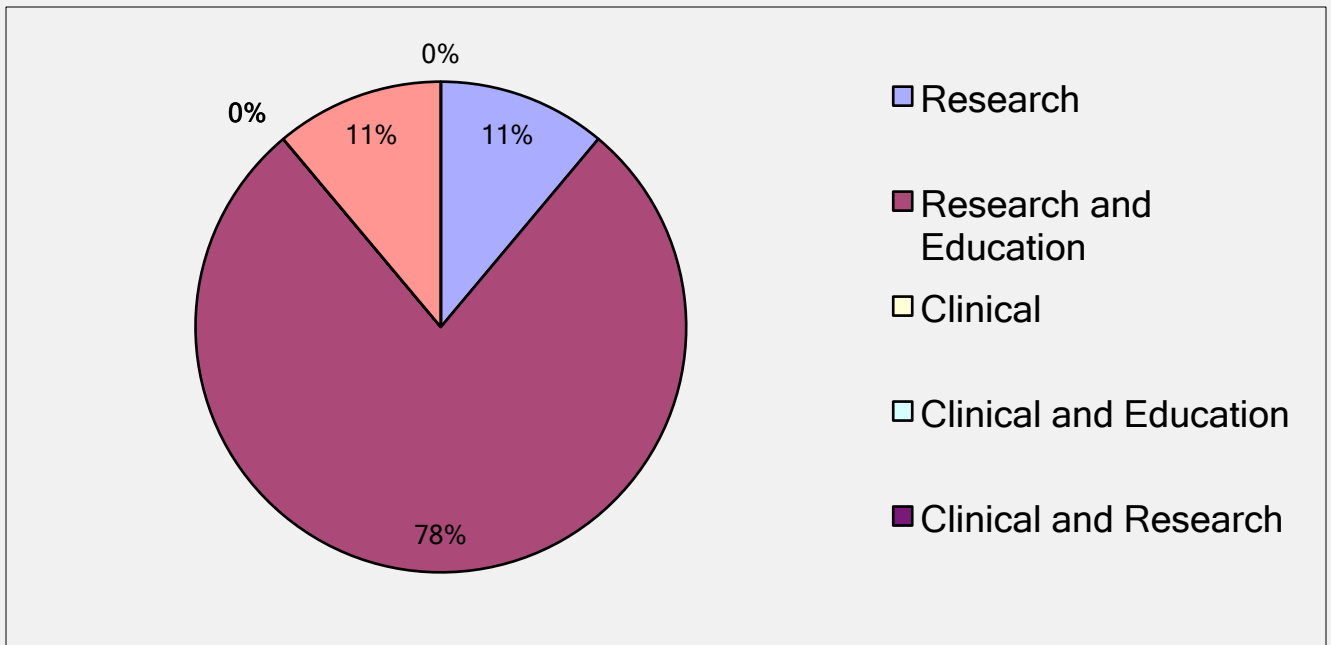


# College of Public Health Survey Summary

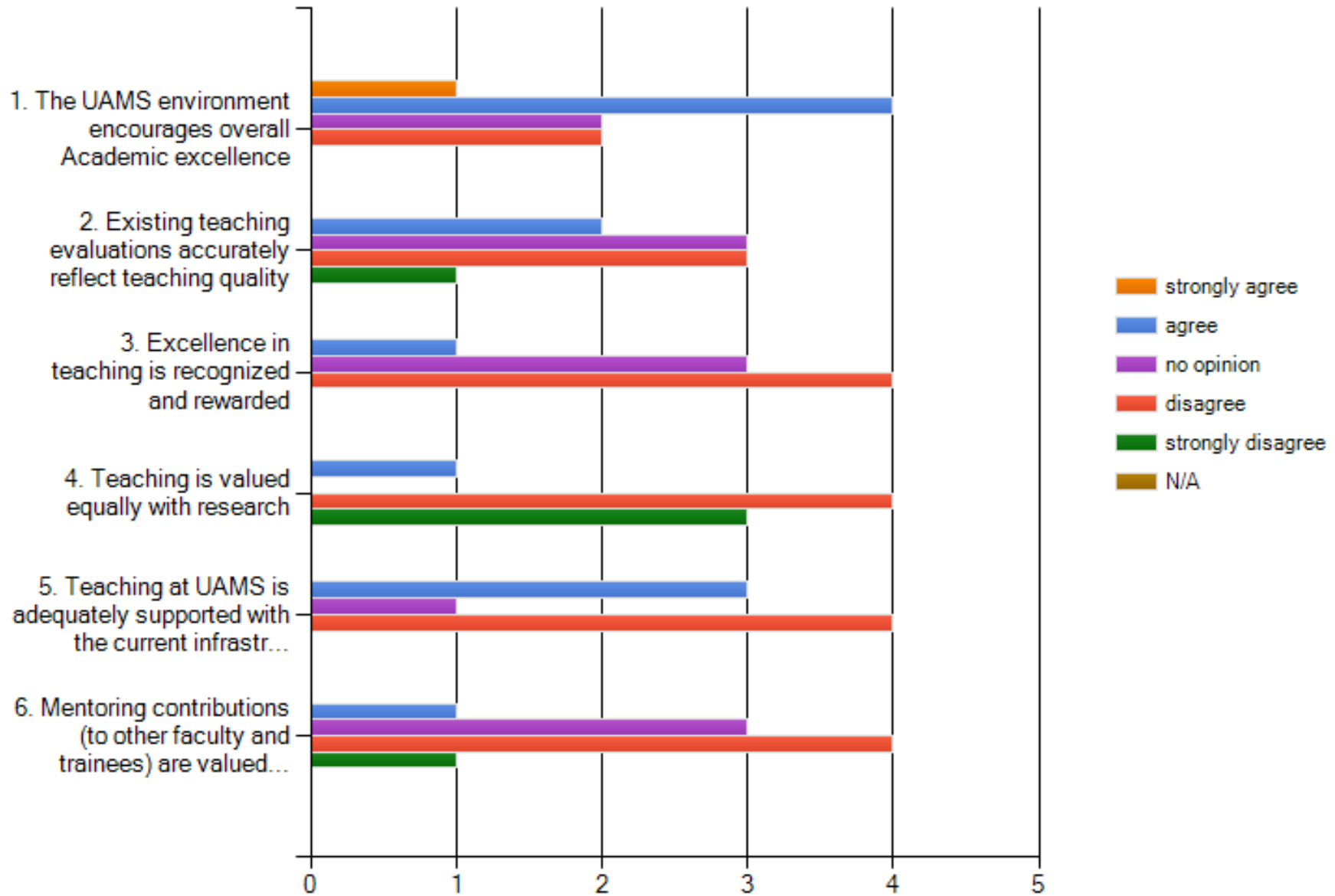
# COPH Demographics

- 9 respondents of total primary faculty
- % respondents are Full-time faculty
- % male; % female respondents
- 0% are clinicians (involved in the clinical mission)
- 22.2% are NON-tenure track; 22.2% are tenure track; 55.6% are already tenured

### In which primary domain/specialty area is (are) your track(s)/positions?

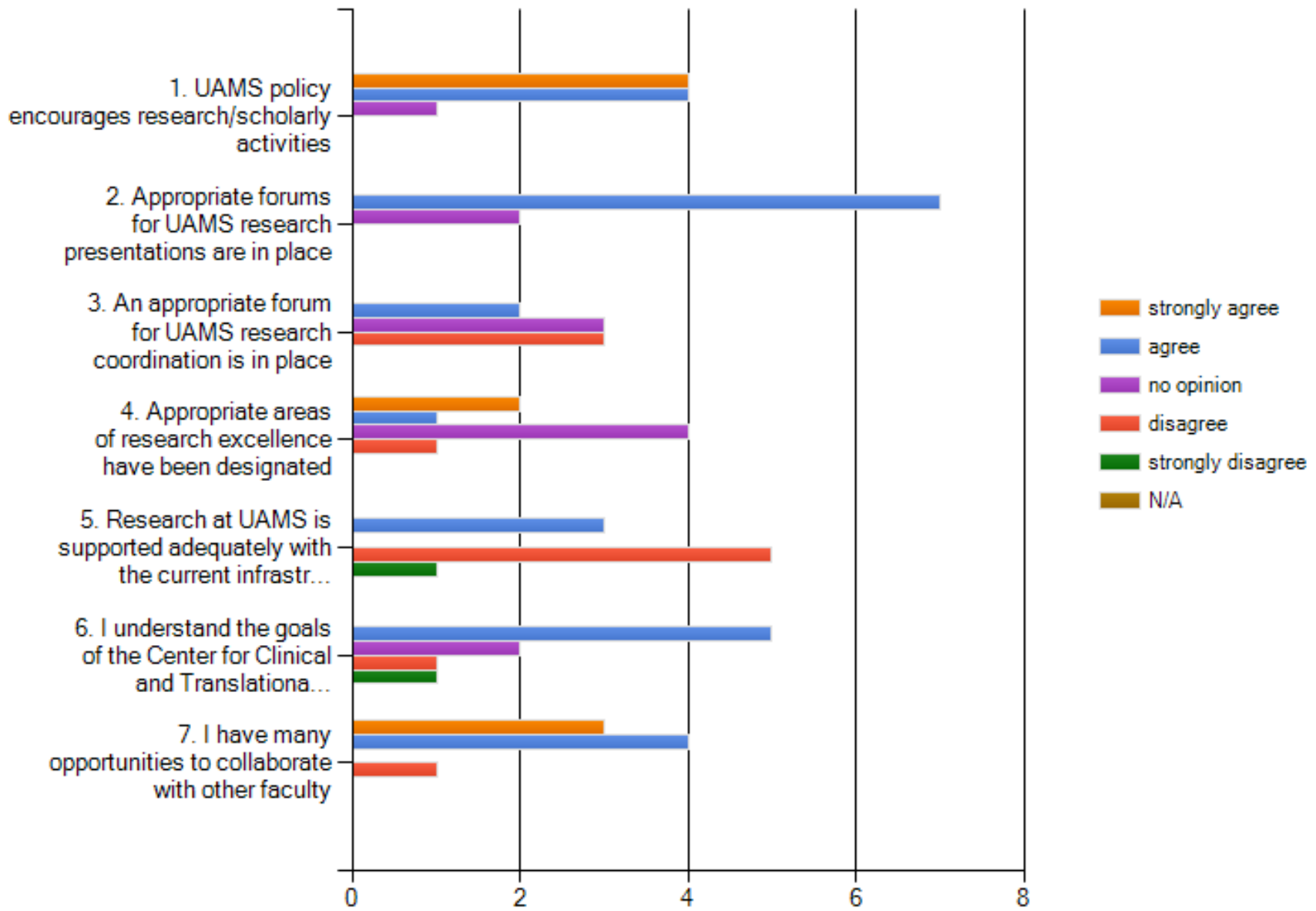


**On a five-point scale, to what extent do you agree with the following statements (strongly agree, agree, no opinion, disagree, strongly disagree, not applicable) Teaching/Mentoring:**

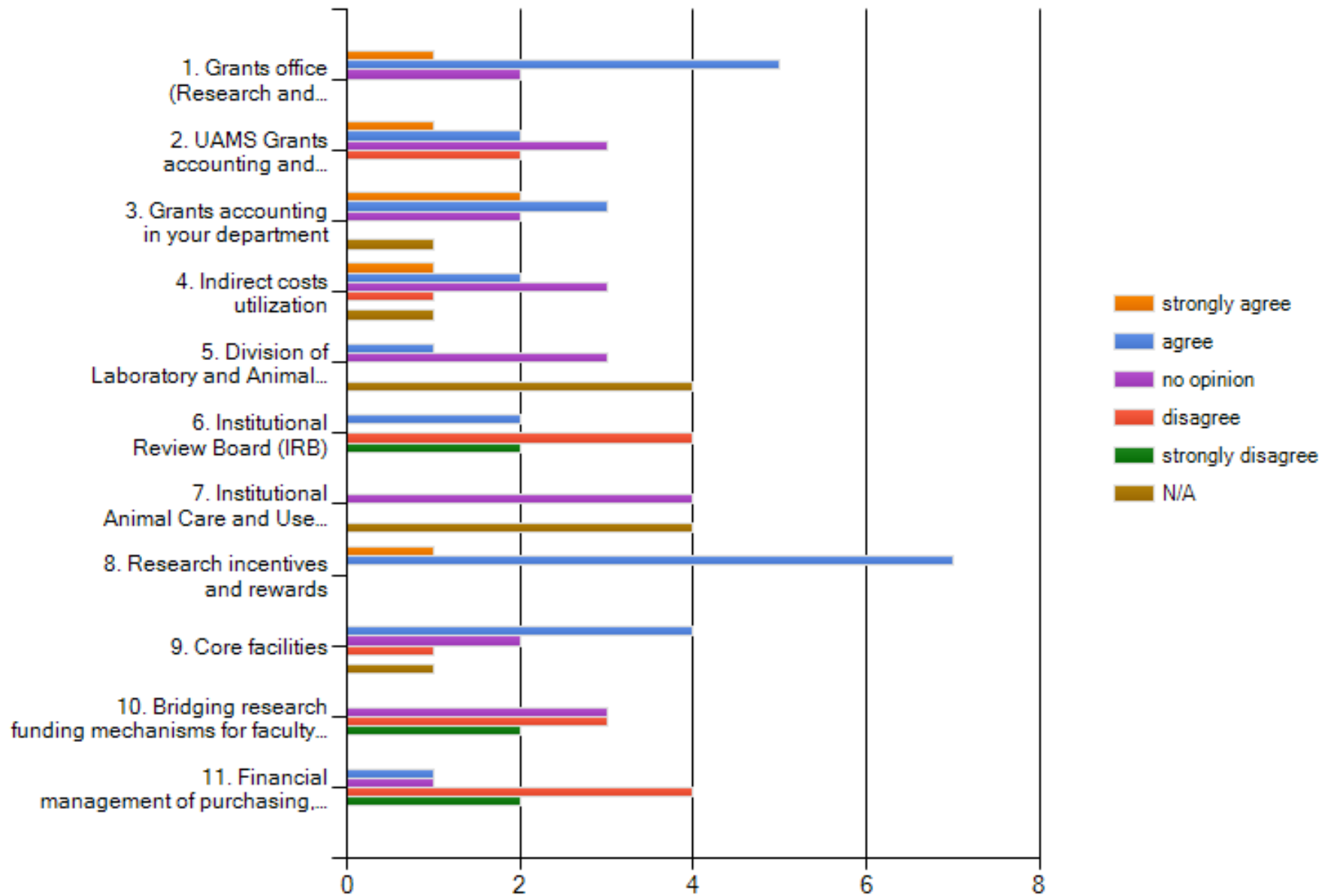


No clinicians respondents in the  
survey for COPH

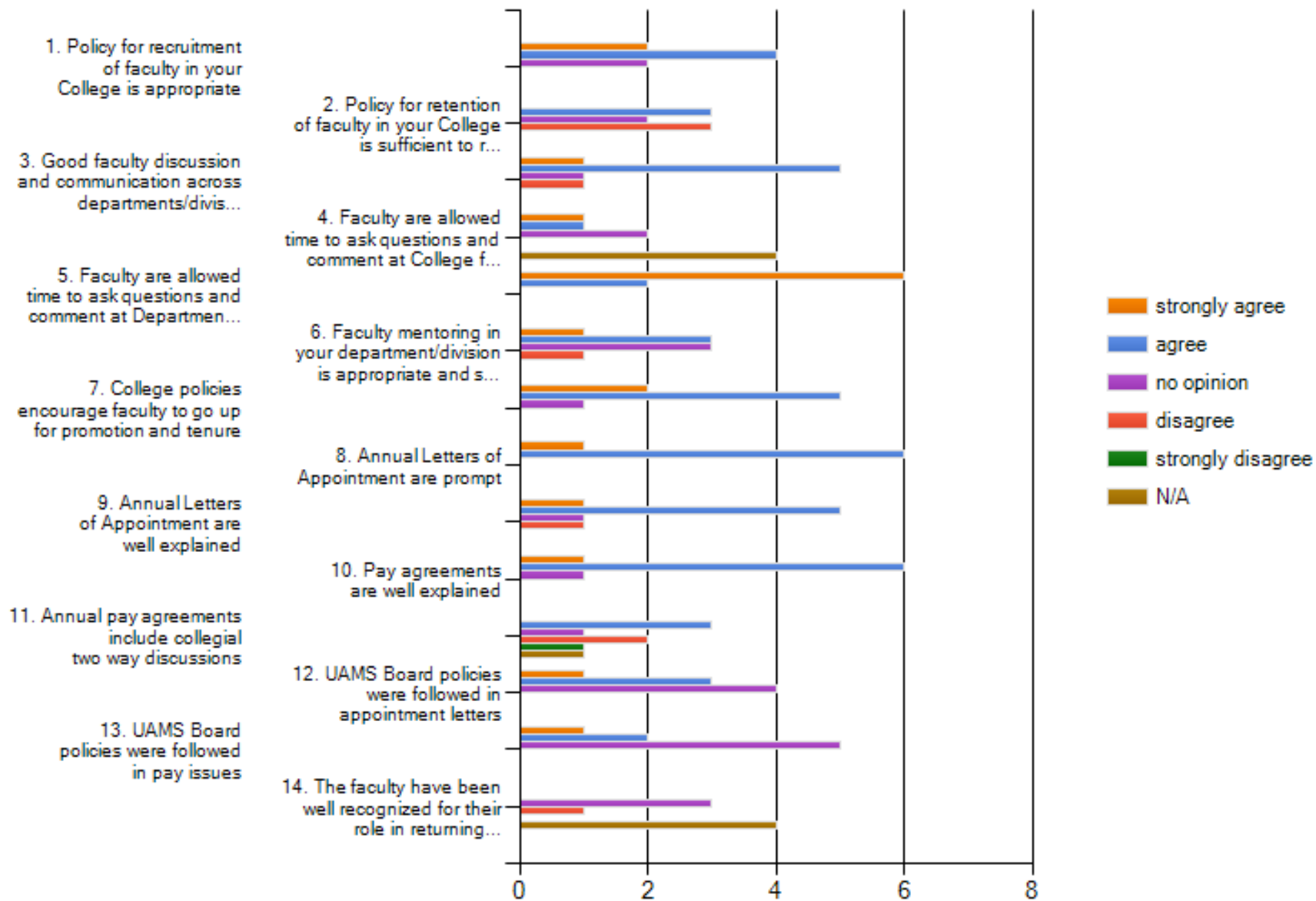
**Research / Scholarly activities: To what extent do you agree with the following statements**



**The following Administrative support entities and policies effectively facilitate research on campus:**

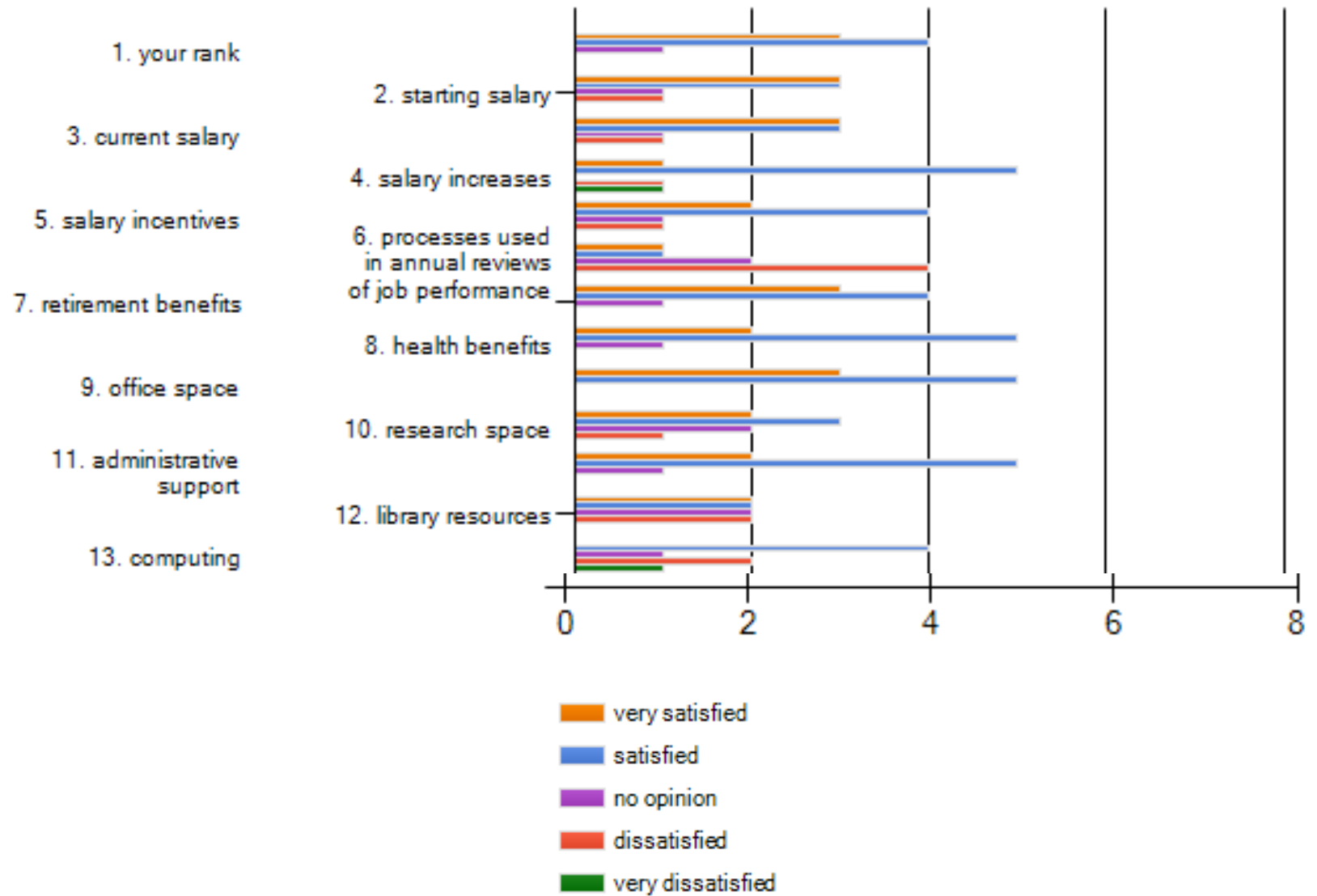


## Faculty Affairs: To what extent do you agree with the following statements

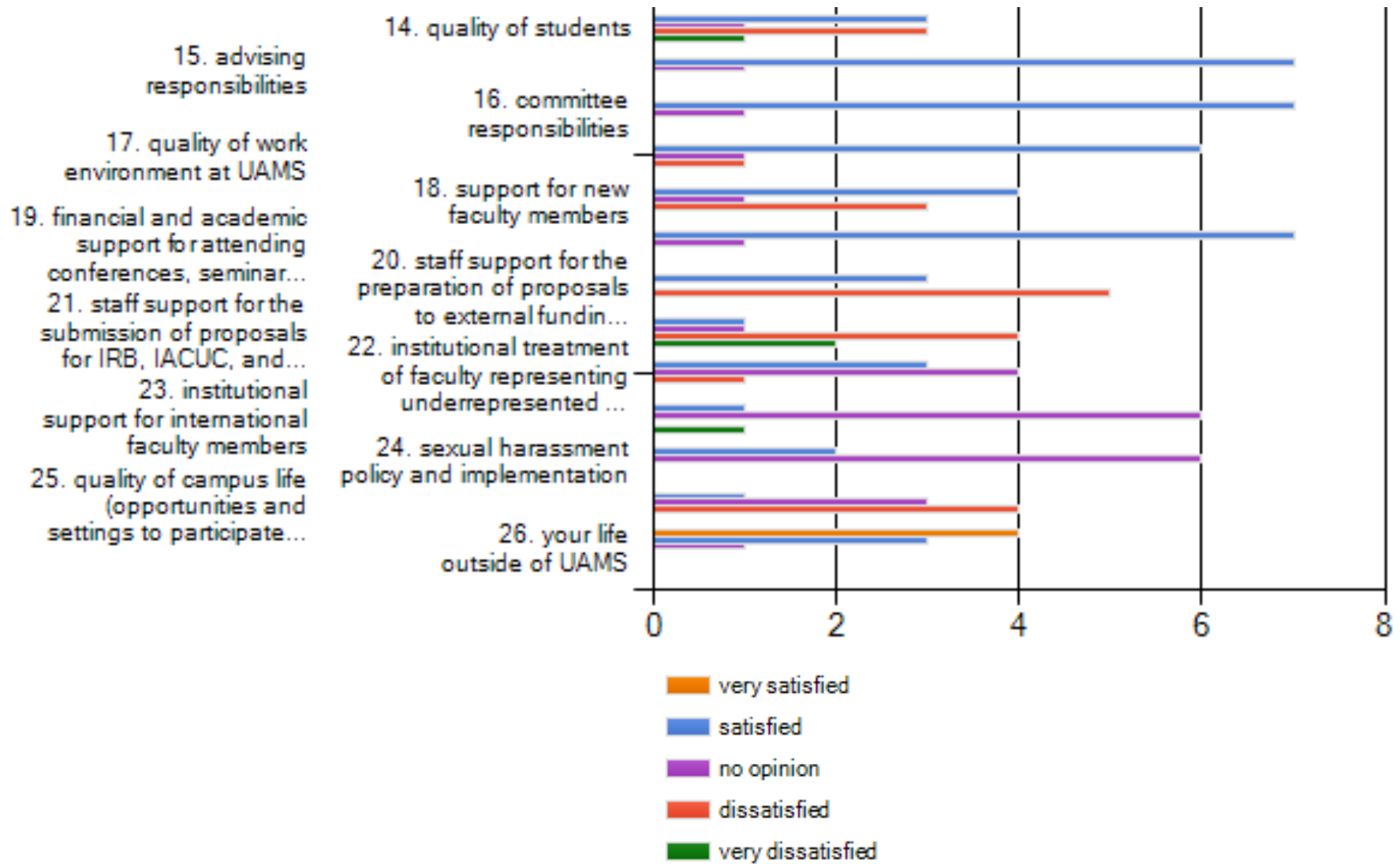




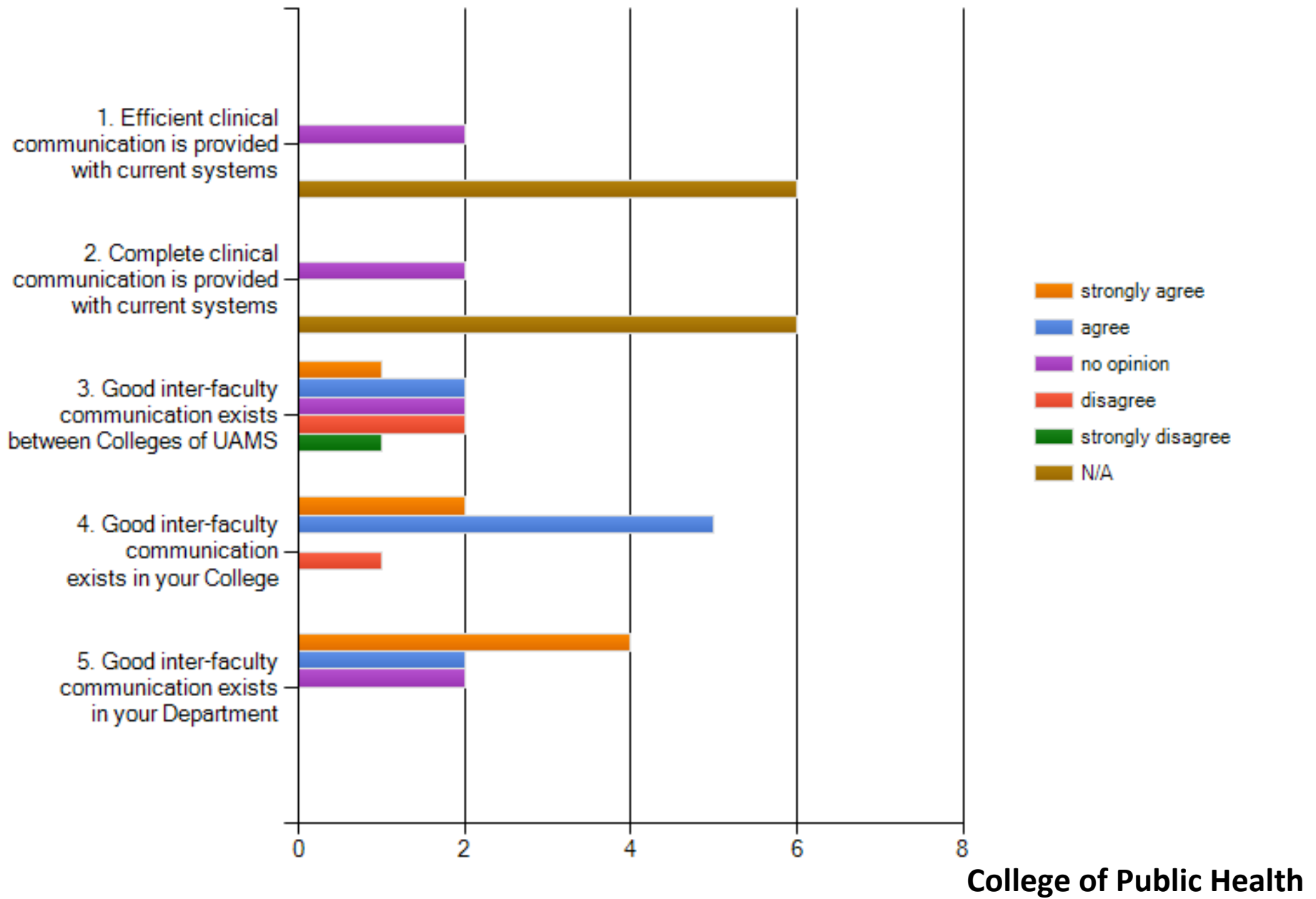
## How well are you satisfied with:



## How well are you satisfied with:



### Communication: To what extent do you agree with the following statements



**Rate the quality (excellent, very good, good, fair, poor) of give and take collegial discussions between you and each of the following:**

