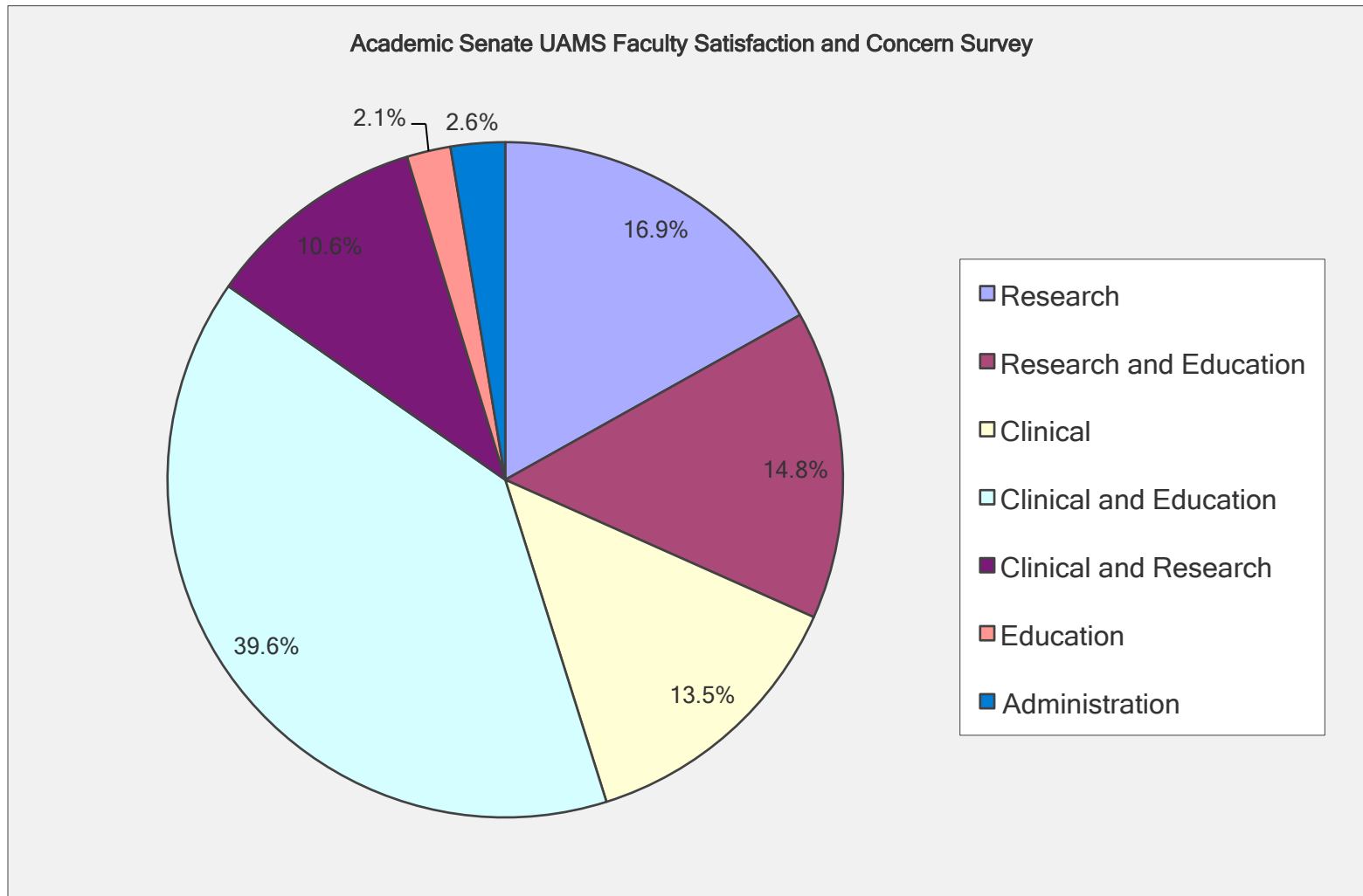


College of Medicine Summary

COM Demographics

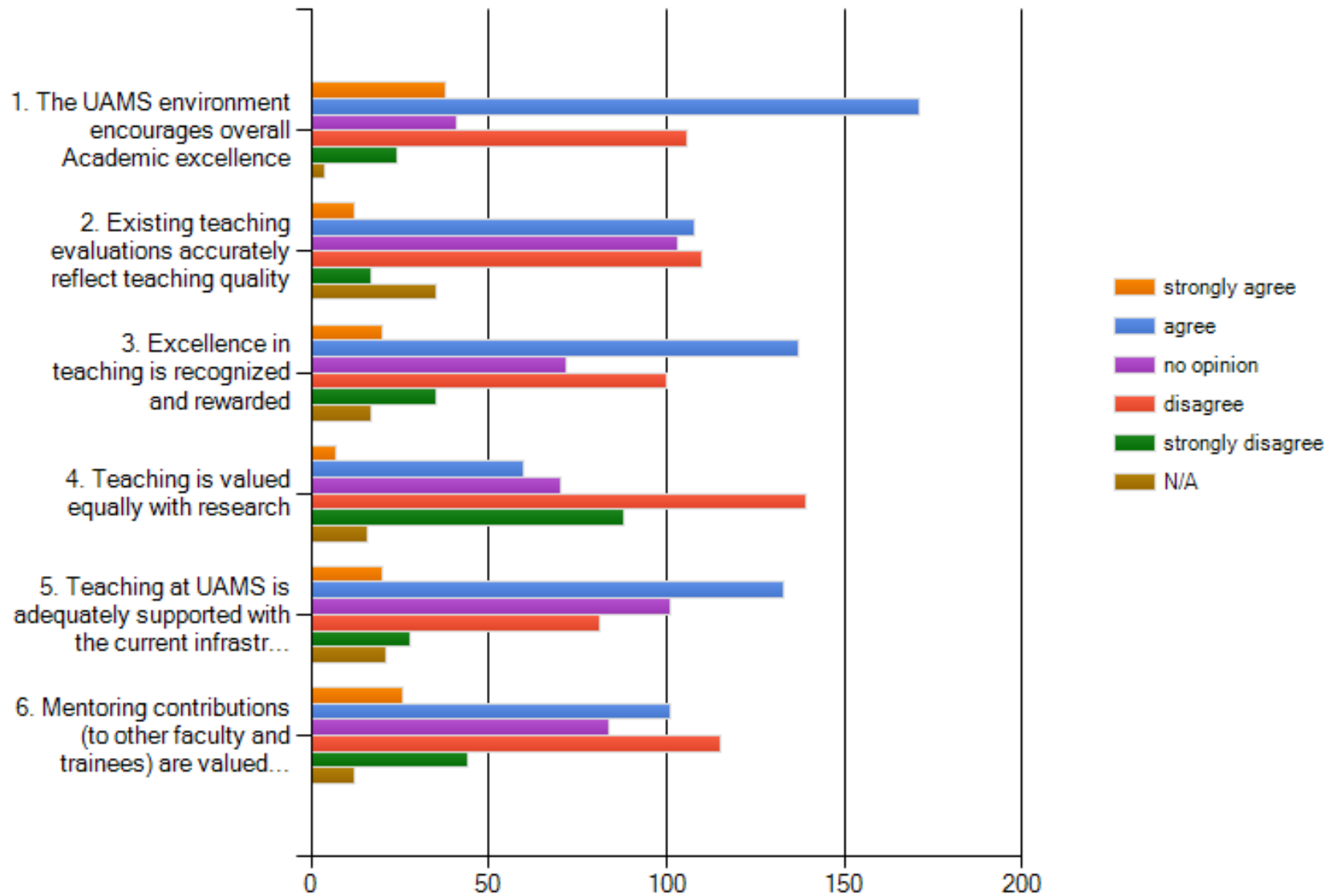
- 380 respondents of >1000 faculty
- 88.7% respondents are Full-time faculty
- 62.9% male; 37.1% female
- 65.4% are clinicians (involved in the clinical mission)
- 25.3% are NON-tenure track; 40.9% are tenure track; 29% are already tenured

In which primary domain/specialty area is (are) your track(s)/positions?

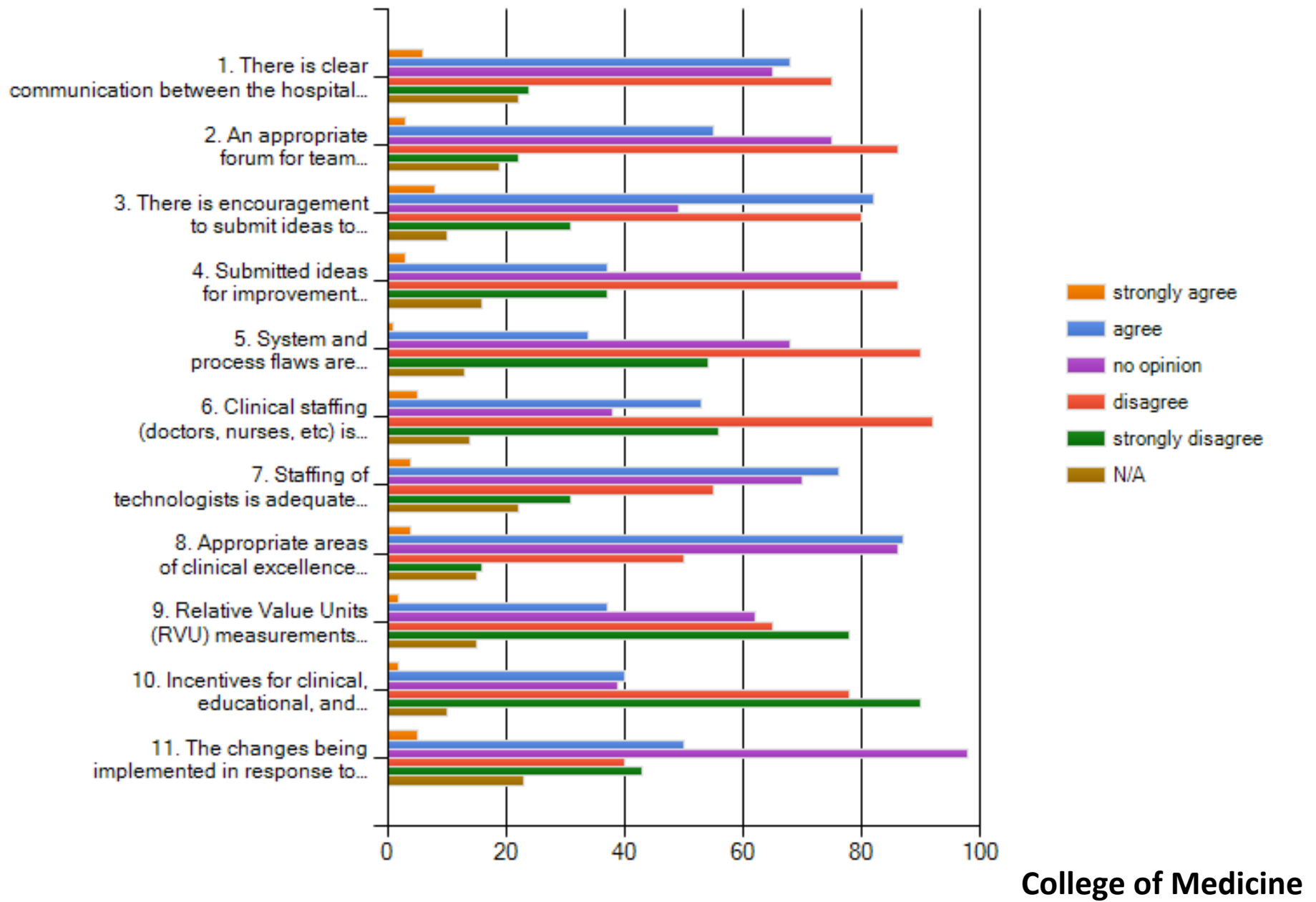


College of Medicine

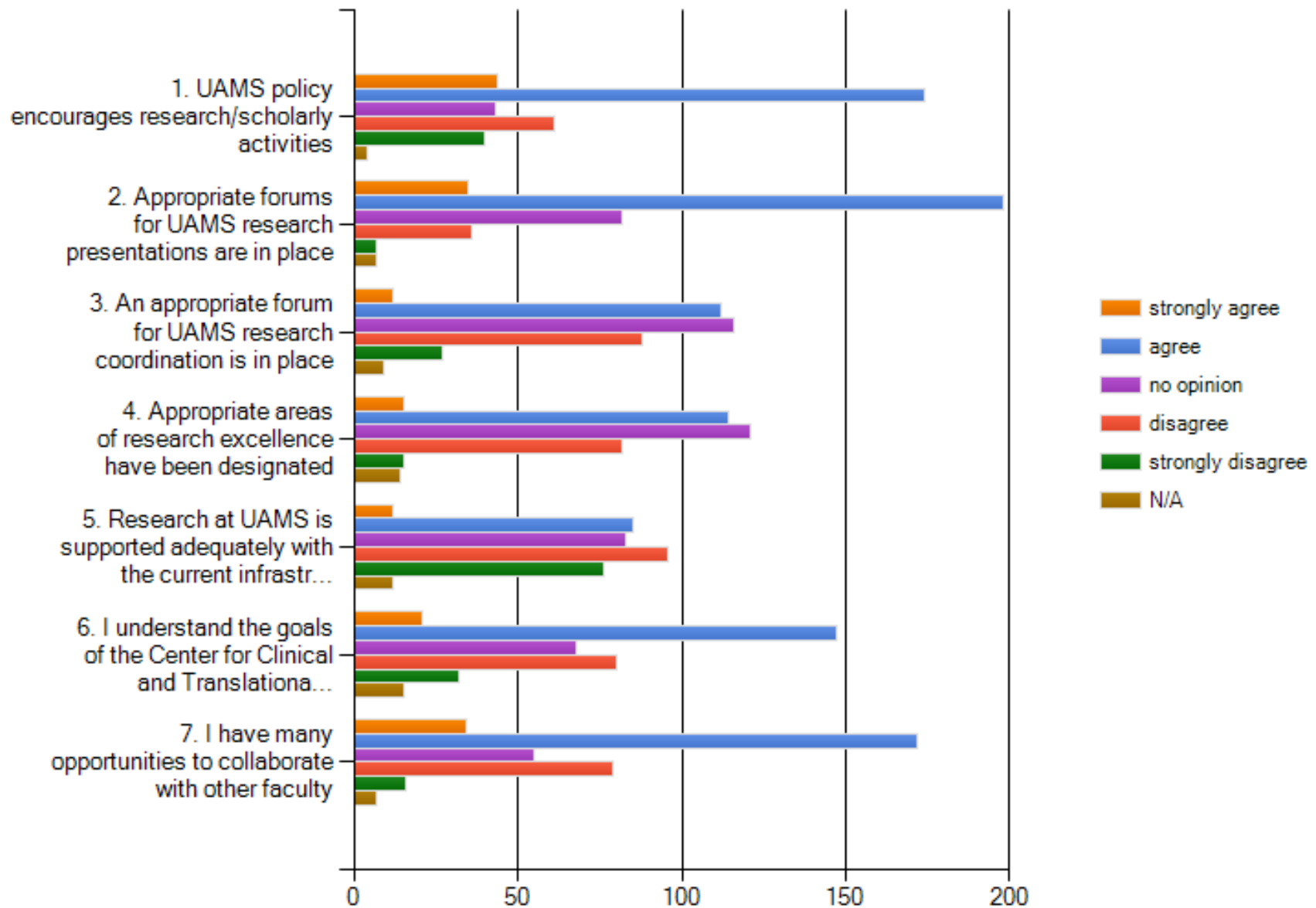
On a five-point scale, to what extent do you agree with the following statements (strongly agree, agree, no opinion, disagree, strongly disagree, not applicable) Teaching/Mentoring:



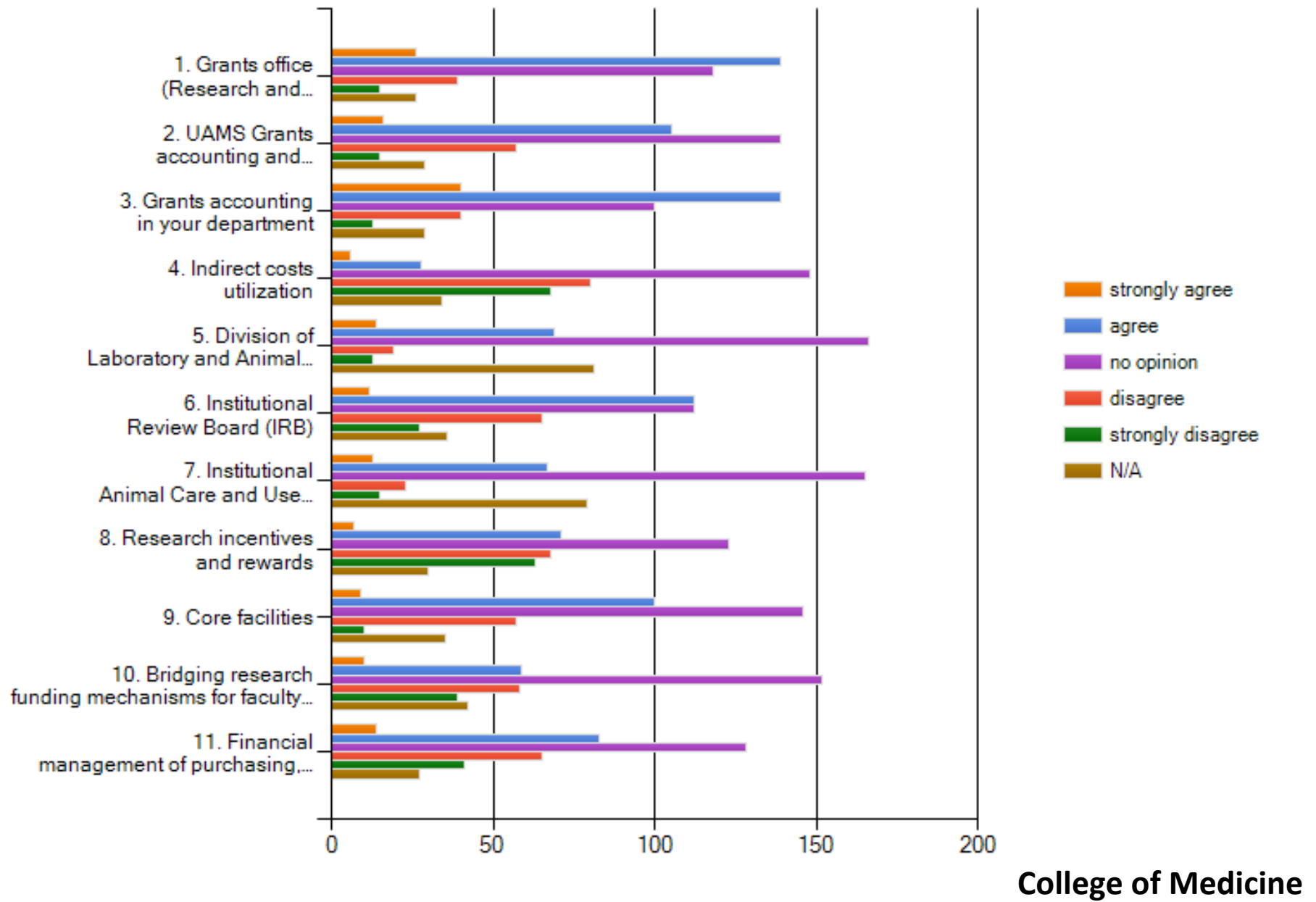
Clinical activities: To what extent do you agree with the following statements



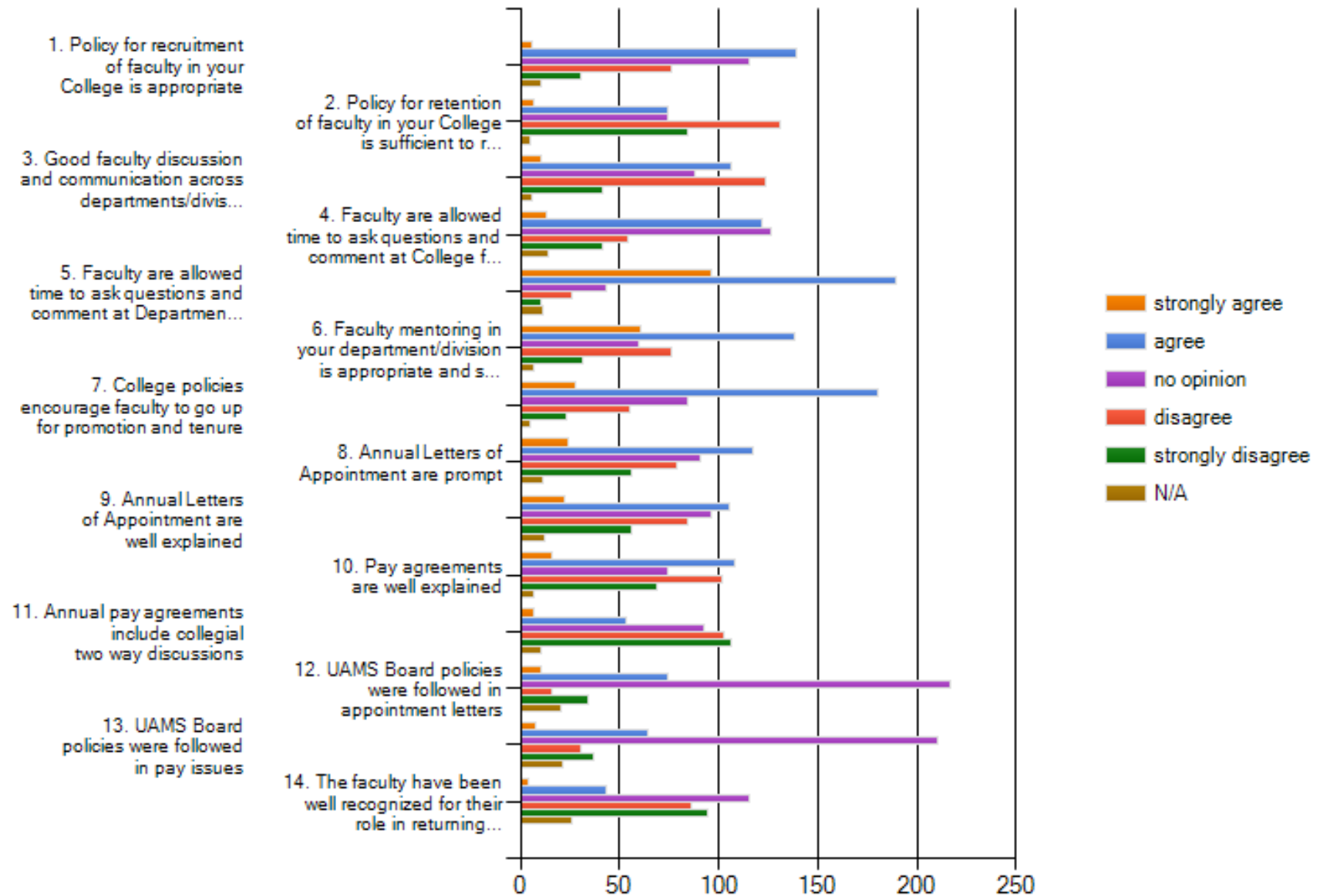
Research / Scholarly activities: To what extent do you agree with the following statements



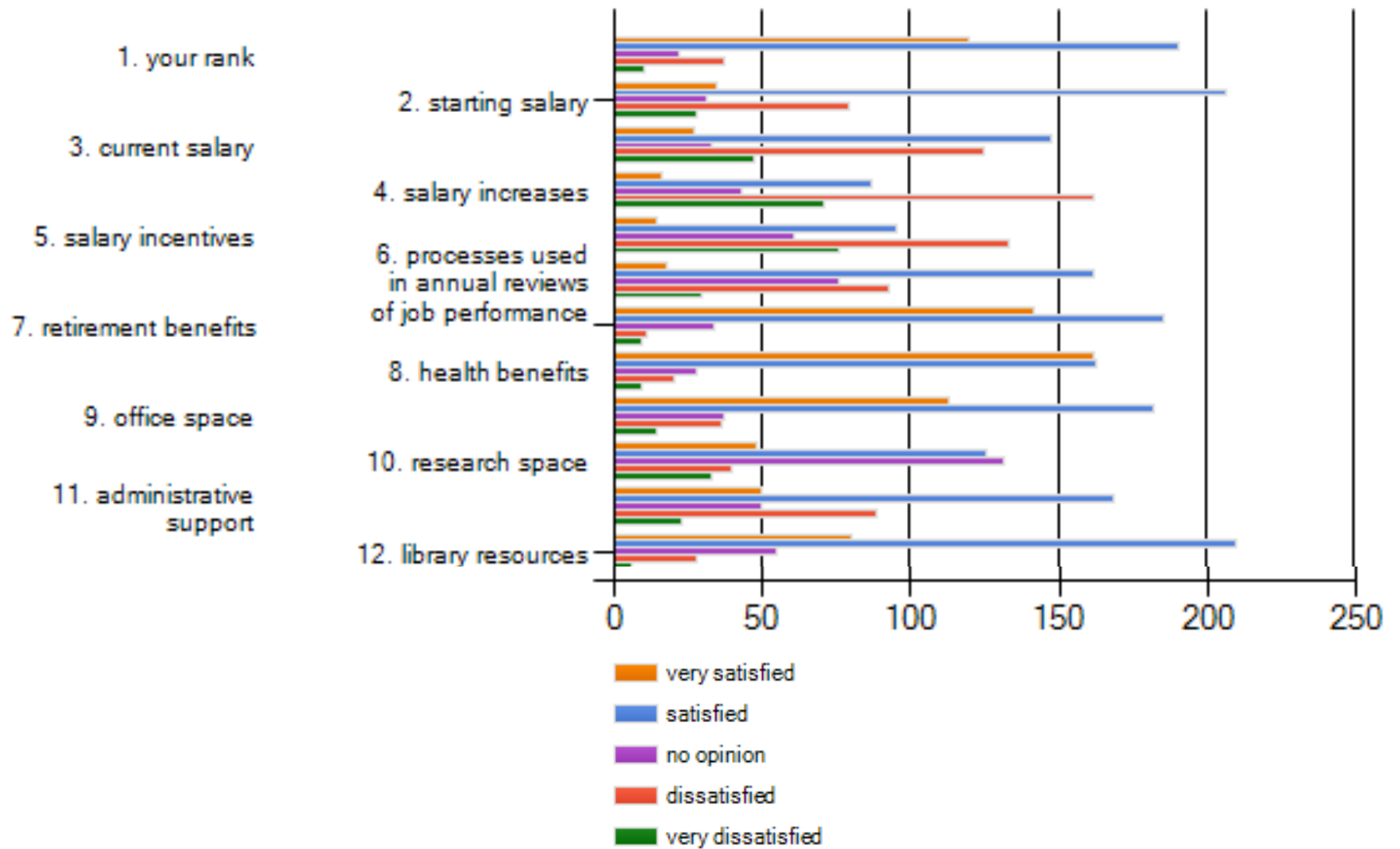
The following Administrative support entities and policies effectively facilitate research on campus:



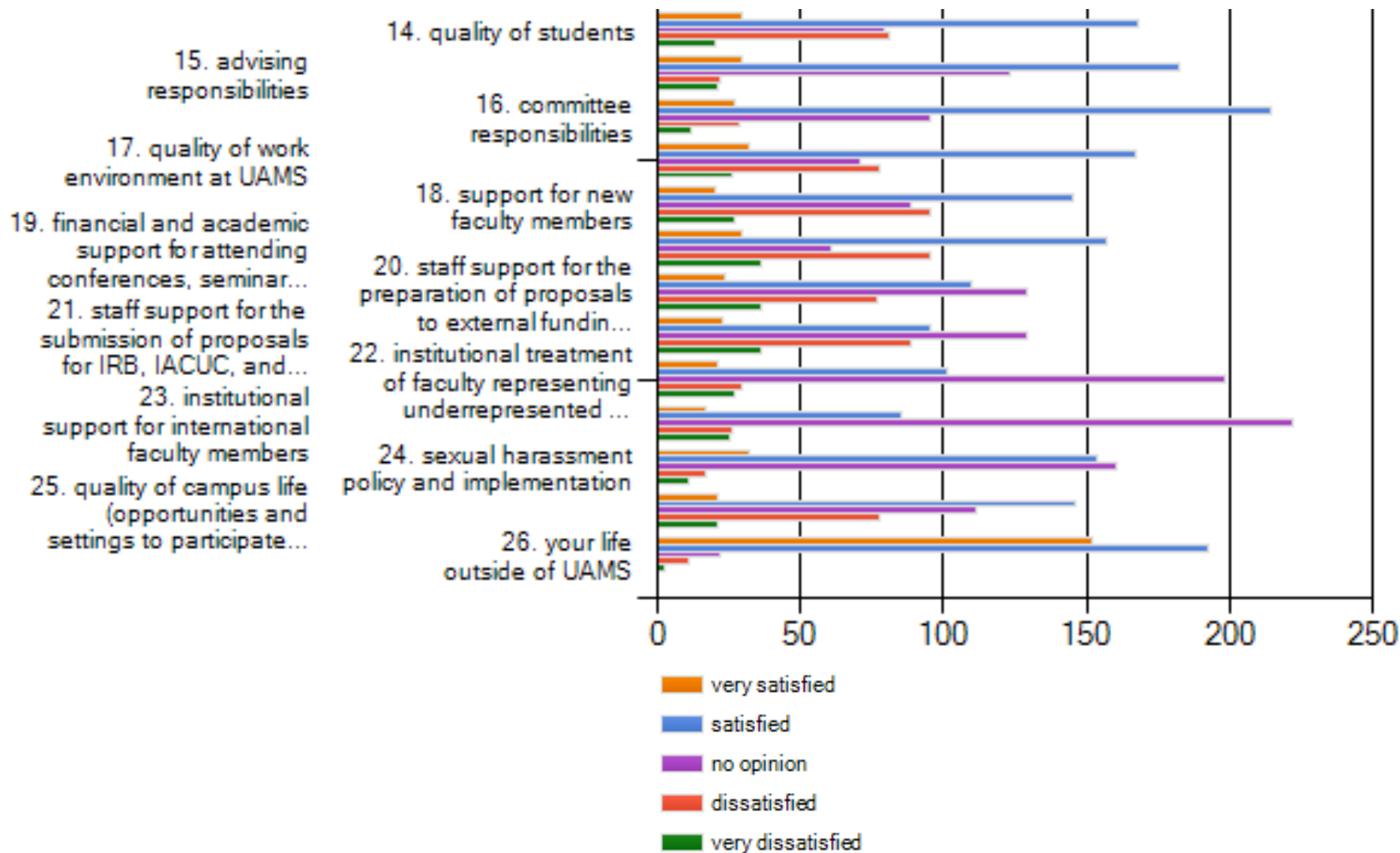
Faculty Affairs: To what extent do you agree with the following statements



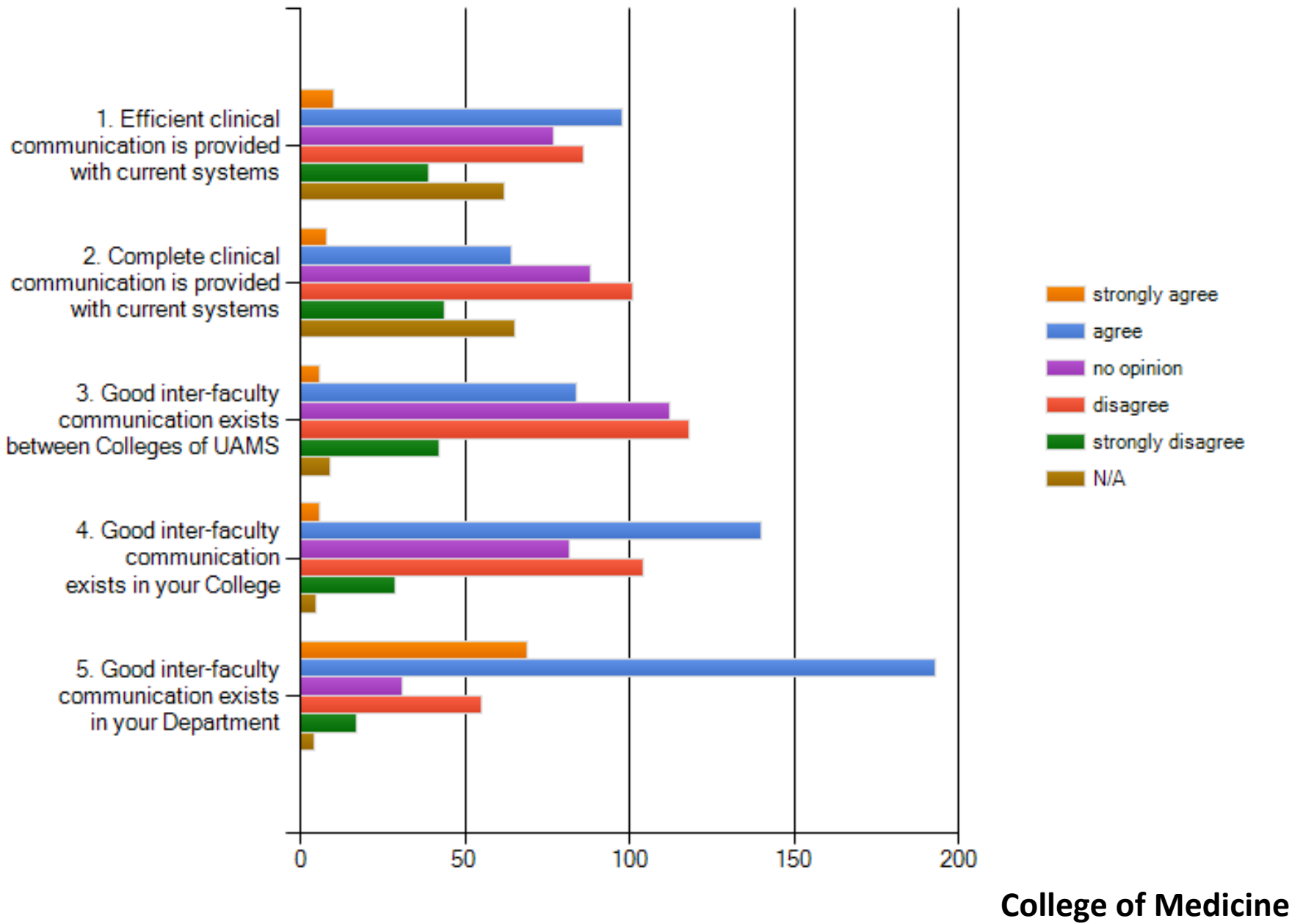
How well are you satisfied with:



How well are you satisfied with:



Communication: To what extent do you agree with the following statements



College of Medicine

Rate the quality (excellent, very good, good, fair, poor) of give and take collegial discussions between you and each of the following:

